



AEL and COIN

Positioning Eastern Ontario for Agri-Food Success

September 12, 2018

Jan Harder, Chair of Planning Committee, Ottawa City Councillor



Ontario Highlights

- 49,600 farms (highest in Canada), generating \$13 billion in sales
- 11.5% of all jobs and 6% of the GDP
- Food is second largest household expenditure after shelter
- Traditional markets dominate sector, technology uptake is moderate, lack of technology training for future farmer
- Trends are concerning (fewer farms, increasing median age of farmer, escalating land costs, etc.)

Ontario's Agri-food Sector is Vital

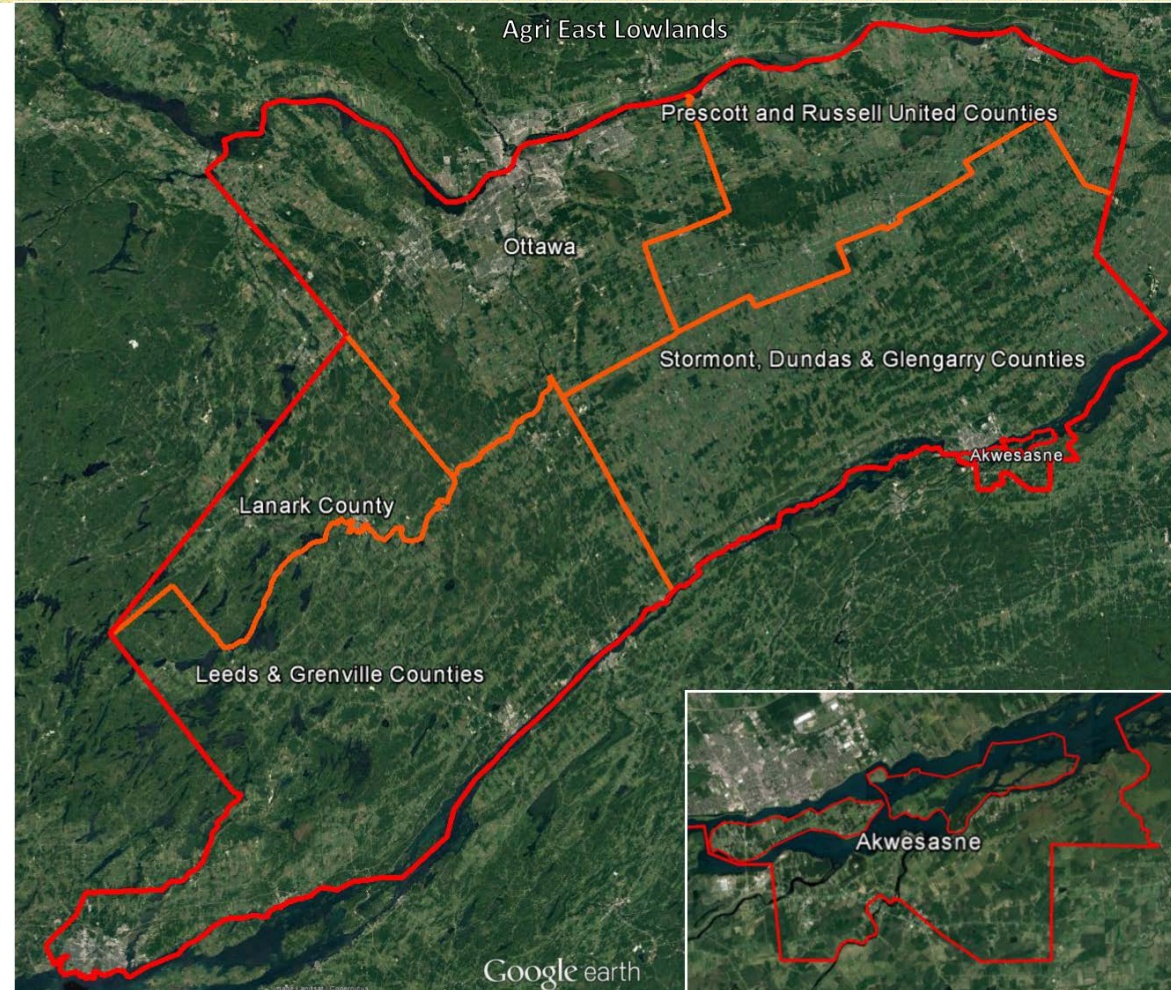


Eastern Ontario Opportunity

- 7,257 farms generating \$1.2 billion in sales
- Eastern Ontario's agri-food sector has unique strengths that merit support and promotion
- Our voice is stronger as a region; stakeholders have identified the need for a collective
- We will work together to create opportunities to strengthen and protect our local agri-food system

Agri East Lowlands (AEL)

- Partnership to foster growth in the in Eastern Lowlands region
- Centred on collaborative projects
- Focused on sector innovation as economic driver
- www.agrieastlowlands.ca



AEL's Mandate

The need to protect our local food system and build on our regional strengths prompted regional economic development stakeholders to form a unified voice.

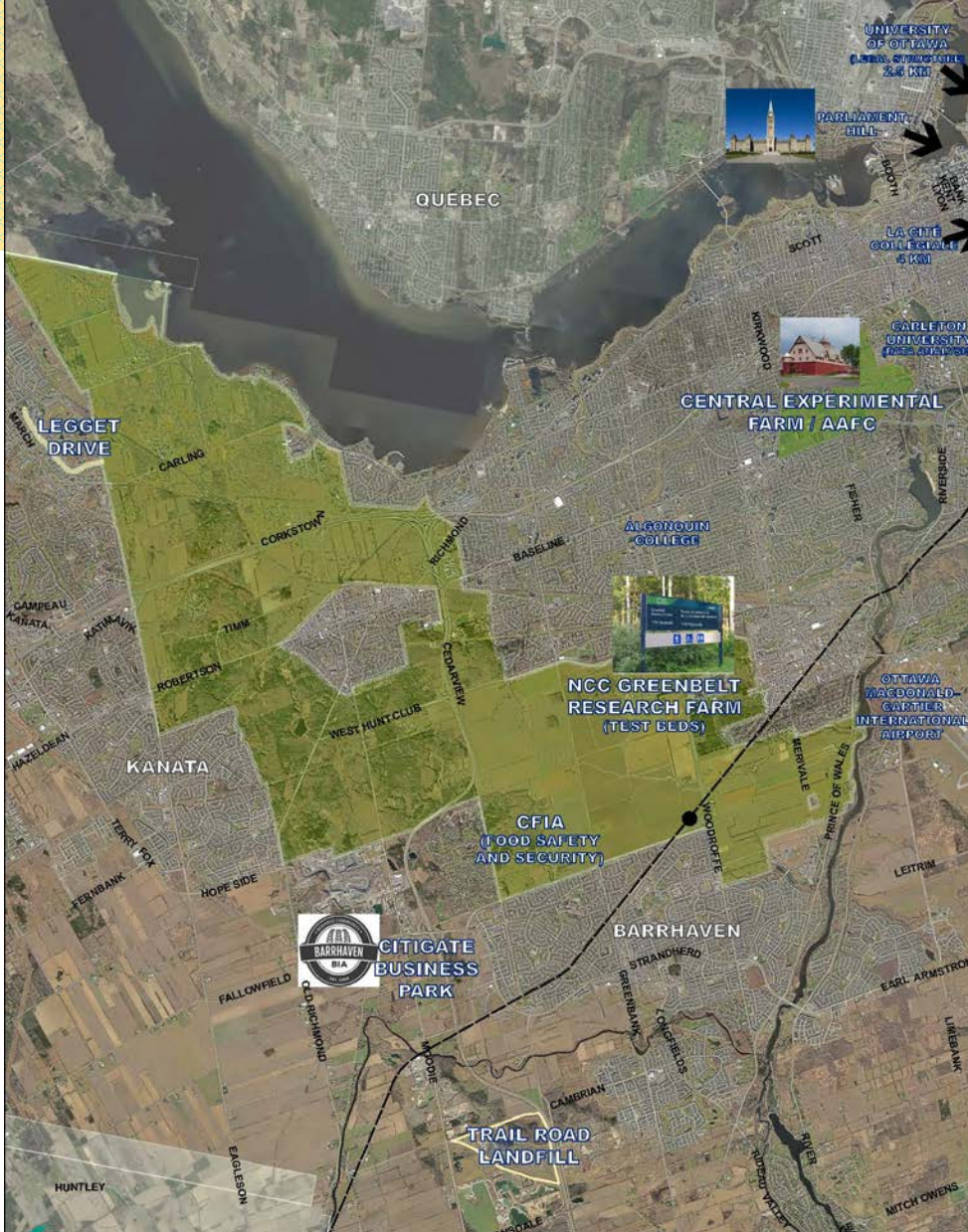
AEL will advocate for the region's agri-food sector within Ontario. Its mission is to be at the forefront of innovation. By building a strong network of collaborators from across sectors, AEL will help to ensure that Eastern Ontario maintains a viable agri-food sector that continues to feed our people and our economy.

Focussed on Sector Innovation



Ottawa's Journey

- 2017 Federal Budget (focus on innovation)
- Symposiums to identify sector challenges
- Innovation Superclusters
- Identified as a smart agriculture node within Canada (leverage ICT sector)

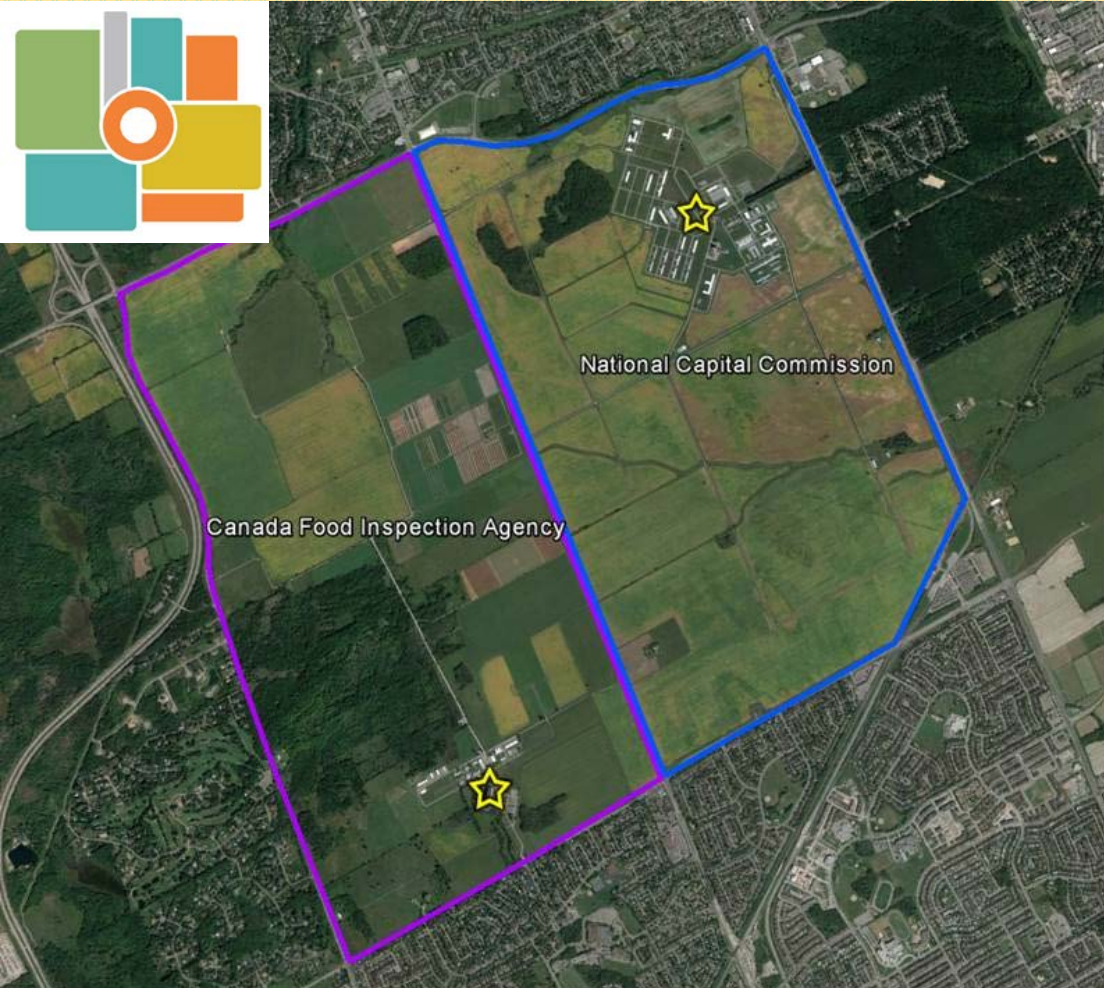


Ottawa as Innovation Node

Ottawa's Agri-Food Strengths

- Over 80% rural, largest CMA in Canada (by area)
- 1,045 farms and \$225 million in commodity sales
- Approximately 39,000 agri-food jobs
- Federal Headquarters and Central Experimental Farm
- 5,400-hectare greenbelt farm
- Access to large test market with high median incomes
- Top high-tech hub in Canada

Centre for Open Innovation and Networking



- Unique urban farm (NCC land)
- Gated 1,860-acre facility with 1,560 acres of farmland (2,000 acres at CFIA)
- 16 kilometres of road network
- Available farm land and office space (rent or build)

COIN Focus Areas

- Plant production and soil health – Improving crop yields and environment
- Big data – Moving and analyzing farm data
- Remote sensing – Monitor conditions, control equipment
- Traceability – Block chain and food security
- Robots, drones, AI, AV – Monitoring and maintenance
- Biodiversity data exchange – Knowledge base

COIN Model

Funding

1. Industry
2. Federal
3. Provincial
4. Municipal

Existing Programs

1. Canadian
2. International

HQ People

1. Industry
2. Academia
3. GoC agencies

Regulator Oversight



Governance

1. Eureka-like
2. Innovate UK compatible

Supply Chain Solutions

1. Alpha tested at COIN
2. Beta tested at AEL
3. Shipped to Market

Autonomous Vehicle Test Track



- Initial project, support by Province's AVIN program
- Next generation networking to support other sectors (smart agriculture)
- First end-to-end integrated AV test site of its kind in North America.
- Operational by end of 2018

Ottawa: Leader in Connectivity

- Agriculture and rural connectivity
- Autonomous vehicles and systems
- Smart city initiatives



Recognizes Strengths in Telecommunication

Thank You

www.agrieastlowlands.ca

<https://www.ottawaCOIN.ca>

<https://www.youtube.com/watch?v=EOs05edjYH0>

Questions?

